

Chapter: Before Takeoff

System of canopy lock with safety latch and sensor (if installed):

WARNING

The system of canopy lock with a sensor indicates insufficiently locking of the canopy and the safety latch prevents unintentional opening of the canopy. The system does not substitute properly execution of canopy latching and locking point during before takeoff procedure!

Chapter: Instrument panel

System of canopy lock with safety latch and sensor (if installed):

On the left side of instrument panel there is located yellow check lamp „CANOPY“ indicating insufficiently locking of canopy. The check lamp may be individual or integrated in the check lamps panel (if equipped).

Chapter: Doors / Canopy

System of canopy lock with safety latch and sensor (if installed):

The aircraft is equipped with canopy lock with safety latch (1, Fig. 1) and sensor (2). When the canopy is partially locked (main latch (3) is plugged-in less then $L = 5 \pm 0.3$ mm), the yellow check lamp „CANOPY“ illuminates on the instrument panel. When the canopy became unlocked, the main latch (3) is hold by a safety latch (1) to avoid the canopy to open.

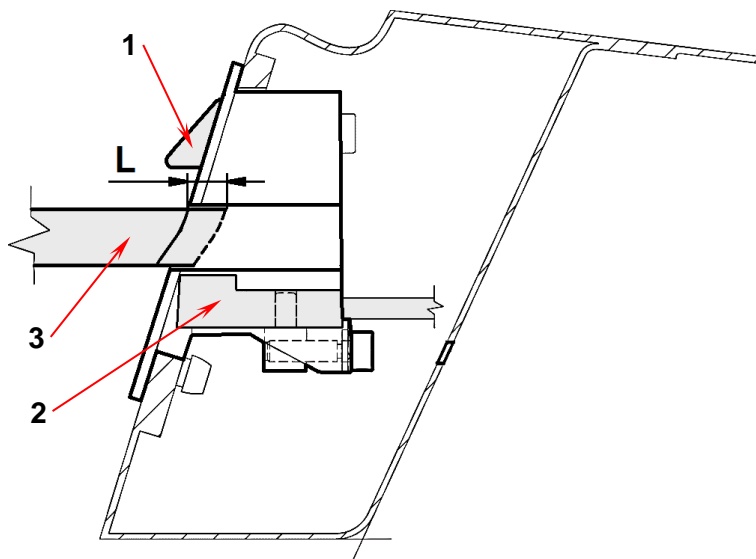


Fig. 1

WARNING

The system of canopy lock with a sensor indicates insufficiently locking of the canopy and the safety latch prevents unintentional opening of the canopy. The system does not substitute properly execution of canopy latching and locking point during before takeoff procedure!